

What is the Civic Centre Area?

The Civic Centre area is a centrally located grouping of municipal parks, public lands and private properties within Town that are interconnected by passive recreational walkways and trails. The properties and uses within the area complement each other creating a vibrant space for residents to enjoy.

What is the Civic Centre Site Revitalization?

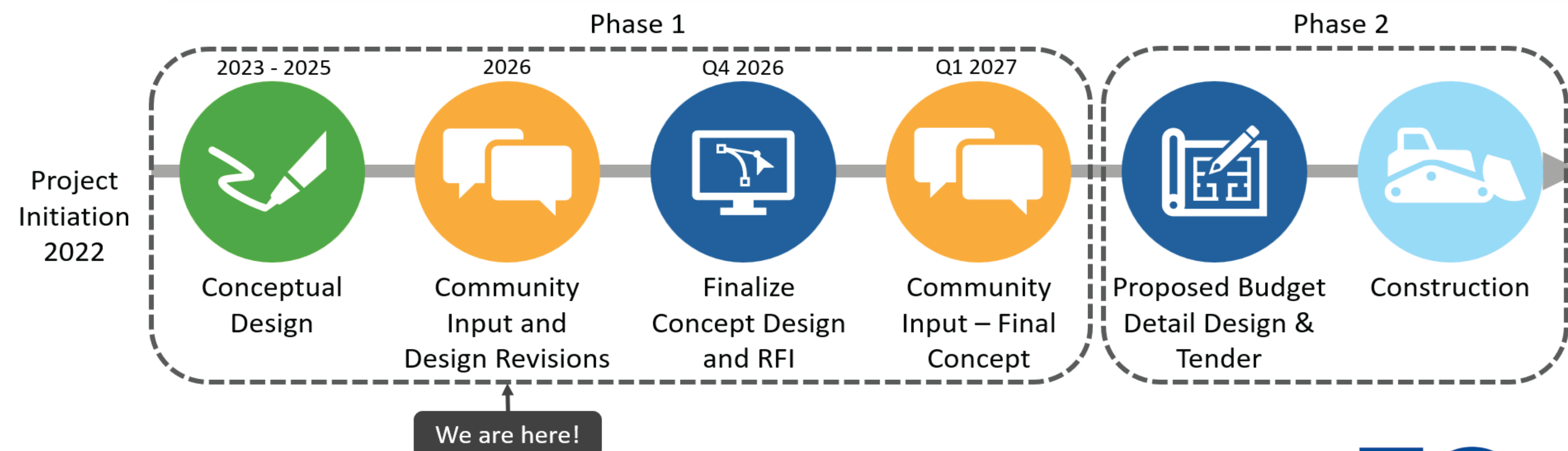
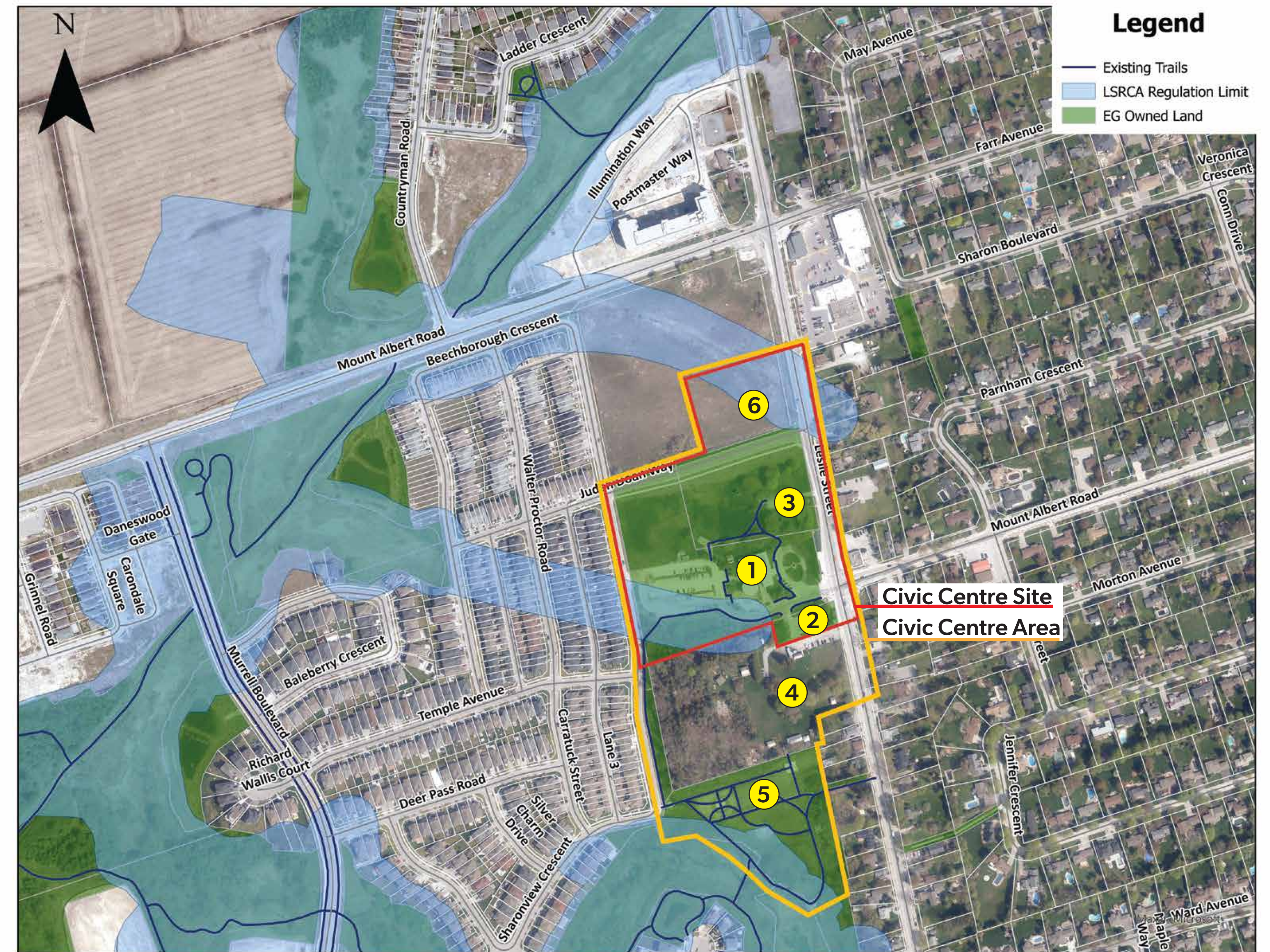
The Civic Centre Site (CCS) Revitalization project is a collaborative and coordinated process focusing on the Civic Centre lands, Temperance Hall, Judah Doan House and potential land conveyance for a park on the north side of Judah Doan Way. The intent of the project is to redevelop the area to elevate heritage and environmental features, arts, culture, accessibility, inclusiveness and integrate a coordinated streetscape design to create a sustainable, and vibrant year-round space that welcomes all.

The concept designs aim to elevate arts, culture, accessibility, and inclusiveness, creating a vibrant space that welcomes all.

Additionally, heritage preservation efforts include the potential relocation of historic structures and supporting the Sharon Museum and Garden's site and a potential future visitors' centre. This sympathetic design will create a dynamic, inclusive, and sustainable site for future generations

- Expansion and enhancement of parkland uses.
- Development Charge Funded.
(No cost to Tax base for design and construction)
- Continues to build upon existing projects within the Civic Centre site and surrounding area.
- Supported in the 2018 Health and Active Living Plan.

- 1 East Gwillimbury Civic Centre (19000 Leslie Street)
- 2 Temperance Hall (18994 Leslie Street)
- 3 Judah Doan house (19040 Leslie Street)
- 4 Sharon Museum and Gardens (SMG) national historic site (18974 Leslie Street)
- 5 Children of Peace Park (68 Sharonview Crescent)
- 6 Potential future parkland



Civic Centre Site Revitalization

Investing and Evolving

Investing and evolving the Civic Centre Site to elevate heritage and environmental features, arts, culture, accessibility, inclusiveness and integrate a coordinated streetscape design to create a sustainable, and vibrant year-round space that welcomes all.



Leslie Street and Mount Albert Road Streetscape Upgrades



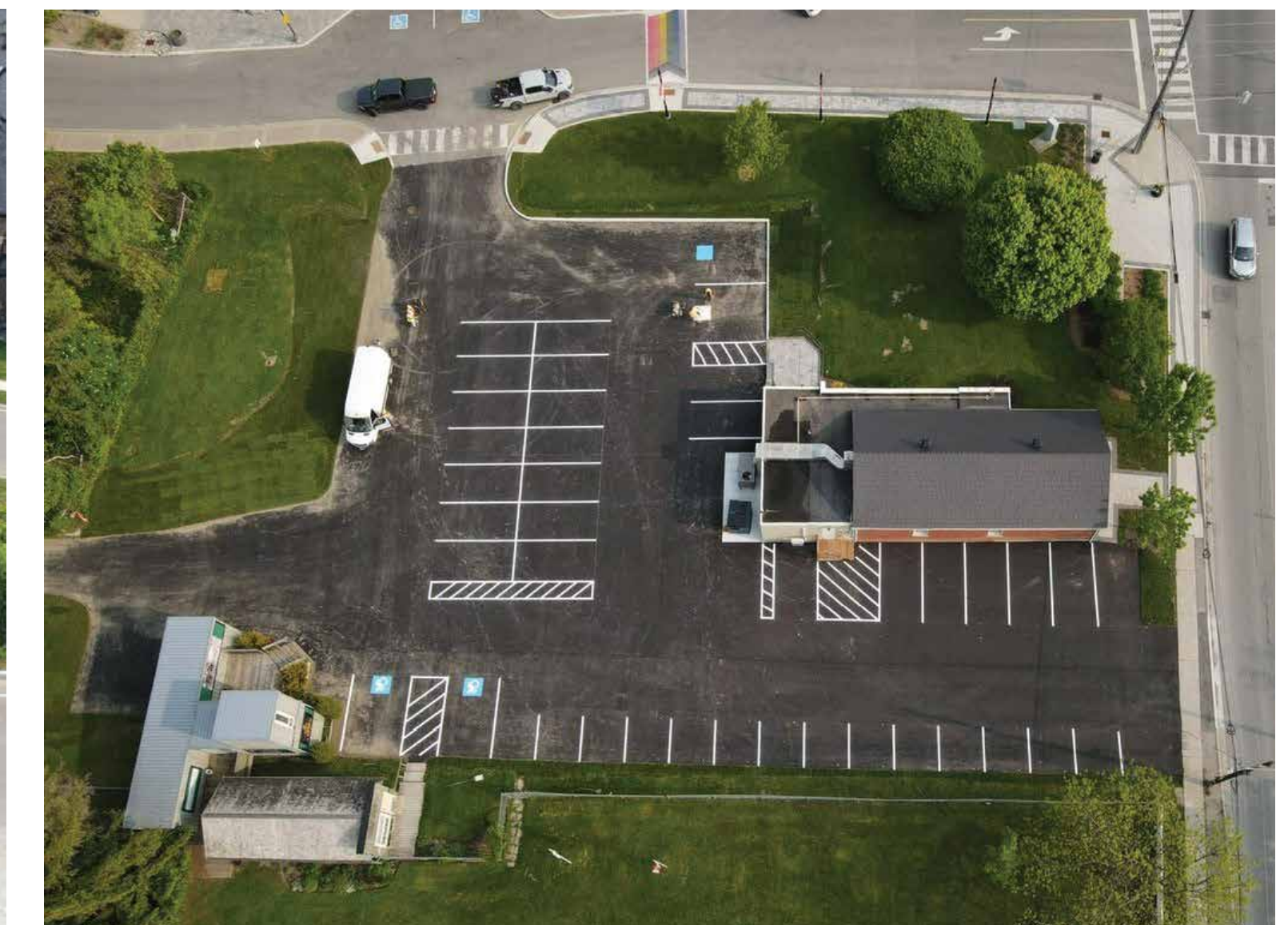
Judah Doan House Reconstruction



Green Accessibility Courtyard



Beechborough Multi-use Path



Temperance Hall Parking Lot



Children of Peace Park



Sharon Creek Trail

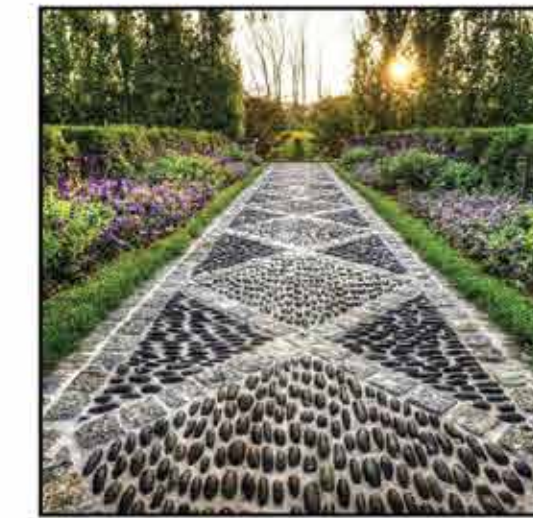
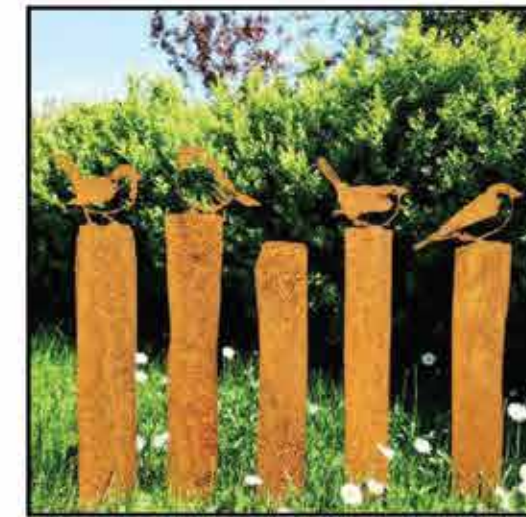


Majority of projects funded through Development Charges.
(No cost to the Tax base)

Civic Centre Site Revitalization

Concept Plan #1

Develop the property into an active park with event space.



THE BARN
-Change Rooms
-Ice Resurfacer

THE CHILDREN AREA (THEMED)

THE ORCHARD

THE STAGE

THE WINDMILL

THE COMMUNITY GARDENS

THE POND
-Water Feature
-Skating Trail

THE AMPHITHEATER

THE GARDEN

THE CHICKEN PEN

**THE CORNER FEATURE/
PARK ENTRY**

THE WOODLOT

CREATE LOTS FOR RELOCATED HERITAGE HOMES FOR COMMERCIAL/BUSINESS USES

THE PICNIC PAVILION

THE FARMERS MARKET

THE CEREMONIAL PLAZA

BEECHBOROUGH CRESCENT

LESLIE STREET

JUDAH DOAN WAY

THE PASTURE

THE SILO

POTENTIAL BUILDING ADDITION

EXISTING BUILDING

SHARON MUSEUM AND GARDENS



Civic Centre Site Revitalization

Concept Plan #2

Create Mixed Use development blocks along street frontages.

Create an event focused park on the Civic Centre Site.

Create lots for relocated heritage homes for Commercial/Business

Coordinate parkland dedication with future development adjacent.

Civic Centre Park amenities include:

- Amphitheatre and stage
- Farmers Market
- Ceremonial Plaza
- Refrigerated ice surface
- Picnic areas
- Community gardens
- Public Art
- Open lawn areas

Potential future park amenities include:

- Play areas
- Splash pad
- Plaza
- Seating
- Open lawn areas



Civic Centre Site Revitalization

Concept Plan #3

Create a passive and active park integrated with potential redevelopment site

Maintain Leslie Street frontage to maintain views and parking for Sharon Museum and Gardens.

Create lots for relocated heritage homes for Commercial/Business

Alternate Civic Centre Site.

Civic Centre Park amenities include:

- Stage and event space
- Farmers Market
- Ceremonial Plaza
- Refrigerated ice surface
- Public Art
- Parking

Potential future park amenities include:

- Play areas
- Splash pad
- Plaza
- Seating
- Open lawn areas

